

AHMANSON THEATRE

2024/25 SEASON



CTG:FWD

DUEL REALITY

Directed by Shana Carroll

SEPTEMBER 11–22, 2024

ONCE UPON A MATTRESS

Music by Mary Rodgers

Lyrics by Marshall Barer

Book by Jay Thompson, Dean Fuller, & Marshall Barer

Adapted by Amy Sherman-Palladino

Choreography by Lorin Latarro

Directed by Lear deBessonet

DECEMBER 10, 2024 – JANUARY 5, 2025

STEPHEN SONDHEIM'S OLD FRIENDS

Starring Bernadette Peters and Lea Salonga

Music & Lyrics by Stephen Sondheim

Devised by Cameron Mackintosh

Choreography by Stephen Mear

Direction & Musical Staging by Matthew Bourne

Side by Side with Julia McKenzie

FEBRUARY 8 – MARCH 9, 2025

LIFE OF PI

Written by Lolita Chakrabarti

Based on the novel by Yann Martel

Directed by Max Webster

MAY 6 – JUNE 1, 2025

PARADE

Book by Alfred Uhry

Music and Lyrics by Jason Robert Brown

Co-Conceived by Harold Prince

Directed by Michael Arden

JUNE 17 – JULY 15, 2025



BANK OF AMERICA

SEASON SPONSOR

todaytix

Official Ticketing Partner of
CENTER THEATRE GROUP




Official Payments Partner of
CENTER THEATRE GROUP






HELP US CREATE THEATRE FOR ALL!



This production was made possible in part by the generosity of our community of supporters, and you can join them by making a tax-deductible gift today.



As a not-for-profit organization, Center Theatre Group relies on the generous support of theatre lovers like you. There are many ways to make an impact. You can become a member and receive benefits like access to our VIP Ticket Desk and invitations to Opening Nights, or you can make a philanthropic gift to directly support the productions you see on our stages or our life-changing education programs for the next generation.



**THERE IS NO GIFT TOO
LARGE OR SMALL.**

Just scan the QR code or visit CTGLA.org/SUPPORT to make a gift or learn more about how you can support.



Center Theatre Group
in association with CMI and Daryl Roth
presents

**BERNADETTE
PETERS**

**LEA
SALONGA**

in
Cameron Mackintosh's
production of

Sondheim's
**OLD
FRIENDS**

Music and Lyrics by
STEPHEN SONDHEIM

Devised by
CAMERON MACKINTOSH

Co-starring

JACOB DICKEY KEVIN EARLEY JASMINE FORSBERG KATE JENNINGS GRANT BONNIE LANGFORD
BETH LEAVEL GAVIN LEE JASON PENNYCOOKE JOANNA RIDING JEREMY SECOMB KYLE SELIG
MARIA WIRRIES DANIEL YEARWOOD
PAIGE FAURE ALEXA LOPEZ GREG MILLS PETER NEUREUTHER

Scenic Design
MATT KINLEY

Costume Design
JILL PARKER

Lighting Design
WARREN LETTON

Sound Design
MICK POTTER

Projection Design
GEORGE REEVE

Original Orchestrations
JONATHAN TUNICK*

Musical Arrangements
STEPHEN METCALFE

Musical Supervision
**ALFONSO CASADO TRIGO
STEPHEN BROOKER**

Music Director
ANNBRITT duCHATEAU

Wig, Hair, and Make-up Design
STEFAN MUSCH

Associate Choreographer
JO MORRIS

Associate Director
NIKKI WOOLLASTON

Casting
**TARA RUBIN, CSA
XAVIER RUBIANO, CSA
PETER VAN DAM, CSA**

Company Manager
EDWARD NELSON

Production Management
**WHAT IF WE PRODUCTIONS
LUKE RICCA**

Production Stage Manager
DAVID LOBER

Choreography
STEPHEN MEAR

Direction and Musical Staging
MATTHEW BOURNE

Side by Side with
JULIA MCKENZIE

Originally produced in London by Cameron Mackintosh

*See musical credits page for additional orchestration credits

FEB 8 – MAR 9, 2025 **AHMANSON THEATRE**

CAST



BERNADETTE PETERS



LEA SALONGA



JACOB DICKEY



KEVIN EARLEY



JASMINE FORSBERG



KATE JENNINGS GRANT



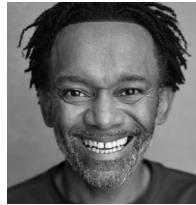
BONNIE LANGFORD



BETH LEAVEL



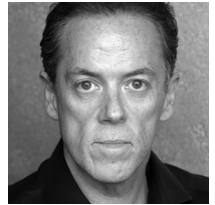
GAVIN LEE



JASON PENNYCOOKE



JOANNA RIDING



JEREMY SECOMB



KYLE SELIG



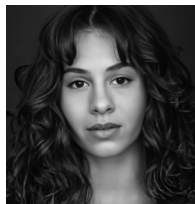
MARIA WIRRIES



DANIEL YEARWOOD



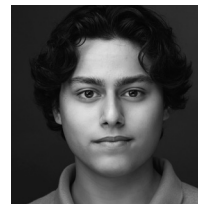
PAIGE FAURE



ALEXA LOPEZ



GREG MILLS



PETER NEUREUTHER

CAST

StarringBernadette Peters, Lea Salonga
Co-Starring.....Jacob Dickey, Kevin Earley, Jasmine Forsberg, Kate Jennings Grant,
Bonnie Langford, Beth Leavel, Gavin Lee, Jason Pennycooke,
Joanna Riding, Jeremy Secomb, Kyle Selig, Maria Wirries, Daniel Yearwood
Co-Star Alternates.....Paige Faure, Alexa Lopez, Greg Mills, Peter Neureuther

Mr. Producer voiced by Cameron Mackintosh

Understudies never substitute for the listed performer unless a specific announcement is made at the time of the performance. If a featured artist is unable to perform, their part will be played by one of their co-stars or co-star alternates.

DANCE CAPTAIN

Paige Faure

STAGE MANAGERS

Michelle Blair

Anna Belle Gilbert

ORCHESTRA

Annbritt duChateau: Music Director

Anne Van Steenwinkel: Music Assistant

Danny Percefull: Associate Music Director/Keyboard 1

Brett Rowe: Keyboard 2
Tristan Cappel: Woodwind 1
Joe Stone: Woodwind 2
Rusty Higgins: Woodwind 3
Danielle Ondarza: Horn
Dan Fornero: Trumpet 1
James Ford: Trumpet 2
Alan Kaplan: Trombone
Alex Bailey: Drums/Percussion
Jen Choi Fischer: Violin
Linnea Powell: Viola
David Mergen: Cello
Kevin Axt: Bass
Robert Payne: Contractor
Brad Gardner: Keyboard 2 Sub

Stuart Andrews: Keyboard Programming

STEPHEN SONDHEIM'S OLD FRIENDS WILL BE PERFORMED WITH ONE 15-MINUTE INTERMISSION.

Any video and/or audio recording of this production is strictly prohibited.

Please turn off all electronic devices such as cellular phones and watch alarms. The use of any recording device, either audio or video, and the taking of photographs, with or without flash, is strictly prohibited.

Latecomers will be seated at the discretion of management. Patrons with disabilities: wheelchair seating is available in a variety of theatre locations. When ordering tickets, please indicate any special needs. For our hearing-impaired guests, the theatre is equipped with listening devices; please contact an usher for assistance.

MUSICAL NUMBERS

ACT I

Prologue	words by James Lapine
“Side by Side”	Bernadette, Lea
“Comedy Tonight”	Bernadette, Lea, Jason, Gavin, Company
“Company”	Company
“The Little Things You Do Together”	Beth, Gavin
“You Could Drive a Person Crazy”	Bonnie, Kate, Joanna
“Live Alone and Like It”	Jason
“Loving You”	Lea
“Getting Married Today”	Joanna, Kevin, Maria, Company
“Into the Woods”	Lea, Jasmine, Jacob, Kevin, Kyle, Alexa, Company
“On the Steps of the Palace”	Jasmine
“Agony”	Kyle, Kevin, Maria
“I Know Things Now”/“Bounce”	Bernadette
“Hello, Little Girl”	Jacob, Bernadette
“Children Will Listen”	Lea, Bernadette
“A Weekend in the Country”	Kate, Gavin, Bonnie, Kevin, Maria, Company
“Send in the Clowns”	Bernadette
“The Ballad of Sweeney Todd”	Jeremy, Company
“The Worst Pies in London”	Lea
“My Friends”	Jeremy
“Pretty Women”	Jeremy, Jacob
“A Little Priest”	Jeremy, Lea
“The Ladies Who Lunch”	Beth
“Sunday”*	Bernadette, Jacob, Company

*Excerpt from James Lapine’s book for *Sunday in the Park with George*.

ACT II

Entr'acte - Overture from *Merrily We Roll Along*..... The Sondheim Orchestra
"Somewhere"Lea
"Tonight Quintet" Jacob, Daniel, Kyle, Maria, Jasmine, Company
"Broadway Baby" Bernadette, Jason, Company
"Everybody Ought to Have a Maid" Gavin, Jason, Kyle
"You Gotta Get A Gimmick" Bernadette, Beth, Joanna
"Waiting For The Girls Upstairs" Kyle, Daniel, Jacob, Jasmine, Maria
"I'm Still Here"*Bonnie
"Could I Leave You?"Gavin
"Buddy's Blues"Jason
"The Boy From..." Kate, Daniel
"Losing My Mind" Bernadette
"Everything's Coming Up Roses"Lea
"Not A Day Goes By" Bernadette, Joanna, Bonnie, Kate, Lea, Beth, Company
"Being Alive" Jacob, Company
"Old Friends" Bernadette, Lea, Company
"Side by Side"(Finale)..... Bernadette, Lea, Company
"Love Is In The Air"** written and performed by Stephen Sondheim

*Includes some of the lyrics especially written by Stephen Sondheim for Shirley MacLaine in the film *Postcards From The Edge*.
**"Love Is In The Air" was originally written as the opening number for *A Funny Thing Happened on the Way to the Forum*, but ultimately it was cut from the show.

WHO'S WHO

STARRING

BERNADETTE PETERS (*Performer*) recently made her West End debut in *Stephen Sondheim's Old Friends*. Broadway: *Hello, Dolly!*; *Follies* (Drama Desk Nomination); *A Little Night Music*; *Gypsy* (Tony and Drama Desk Nominations); *Annie Get Your Gun* (Tony and Drama Desk Awards); *The Goodbye Girl* (Tony Nomination); *Into the Woods* (Drama Desk Nomination); *Song and Dance* (Tony and Drama Desk Awards); *Sunday in the Park with George* (Tony and Drama Desk Nominations); *Mack & Mabel* (Tony and Drama Desk Nominations); *On the Town* (Tony Nomination); *Dames at Sea* (Drama Desk Nomination). TV: *High Desert*, *Zoey's Extraordinary Christmas*, *Zoey's Extraordinary Playlist* (Emmy Nomination), *The Good Fight*, *Mozart in the Jungle*, *Smash*, *Ally McBeal* (Emmy Nomination), *Bobbie's Girl* (Emmy Nomination), among others. Film: *tick, tick...BOOM*, *The Broken Hearts Gallery*, *Coming Up Roses*, *Living Proof*, *It Runs in the Family*, *Impromptu*, *Alice*, *Pink Cadillac*, *Slaves of New York*, *Annie*, *Pennies from Heaven* (Golden Globe Award), *The Jerk*, *Silent Movie*, *The Longest Yard*. Recordings: six solo albums including the Grammy-nominated, *I'll Be Your Baby Tonight* and *Sondheim, Etc.: Bernadette Peters Live at Carnegie Hall*. A *New York Times* best-selling author, Bernadette co-founded Broadway Barks and founded its UK counterpart, West End Woofs.

LEA SALONGA (*Performer*) most recently starred in the West End production of *Stephen Sondheim's Old Friends* and in *Here Lies Love* on Broadway, which she also produced. She is best known for her Tony, Olivier, Drama Desk, and Outer Critics Circle Award-winning performance as Kim in *Miss Saigon*. Other Broadway/West End credits include *Les Misérables*, *Once on This Island*, *Allegiance*, and *Flower Drum Song*. Fans of all ages recognize Lea as the singing voice of Princess Jasmine from *Aladdin* and Fa Mulan from *Mulan* and *Mulan II*. Lea stars in *Pretty Little Liars: Original Sin* for MAX, the Sony musical-drama *Yellow Rose*, *Centaurworld* for Netflix, and in FX's *Little Demon*. She has made multiple appearances on PBS Great Performances including *Lea Salonga: Live from Sydney Opera House* and the *Les Misérables* 10th and 25th anniversary concerts. Lea has released fourteen albums including her latest, *Sounding Joy*, and has performed sold-out concerts in landmark venues around the globe. She has received the Time100 Impact Award from *Time Magazine*, the Gold Legend Award from *Gold House*, and is honored as a "Disney Legend" by the Walt Disney Company.

CO-STARRING

JACOB DICKEY (*Performer*). Broadway: *Aladdin* (*Aladdin*), *Company* (New Yorker; u/s Andy, Paul, Theo). 1st Nat'l Tour: *Aladdin* (*Aladdin*), *Company* (Andy). Off-Broadway: *Emojiland* (Sunny). TV: *Partner Track*, *The Other Two*, *Blue Bloods*, *Gossip Girl*, *The First Lady*. Jacob is profoundly grateful to celebrate Stephen Sondheim's legacy with this dream team. He sends big love to all those who helped him along the way but especially to his husband. @js_dickey

KEVIN EARLEY (*Performer*). Broadway: *Les Misérables*, *Thoroughly Modern Millie*, *A Tale of Two Cities*. The title role in Roundabout's *Death Takes a Holiday* (NY Drama Desk Nomination), the Balladeer in Sondheim's *Assassins* (Chicago Joseph Jefferson Award). Other favorites: Sondheim's Prince/Wolf in *Into the Woods*, Sweeney in *Sweeney Todd*, Young Ben in *Follies*, and Booth in *Assassins*, additionally, Pierre in *Natasha, Pierre, & the Great Comet of 1812* and Andrews in *Titanic*. Gratitude to Julie Ann. kevinearley.com

JASMINE FORSBERG (*Performer*) is an actor and songwriter from Orlando, Florida. Broadway: *Six*, *Here Lies Love*. First National Tour: *Six*. Off-Broadway: *Broadway Bounty Hunter*. Regional: *A Grand Night for Singing* (Goodspeed), *Love in Hate Nation* (Two River Theater), *Wild Fire* (Denver Center). TV: *One December Night* (Hallmark), *Llamas* (Nick Jr.). Jasmine's debut single, "do you," is streaming on all platforms. BFA from Penn State. Endless gratitude to CESD, Tara Rubin Casting, and my loved ones. jasmineforsberg.com

KATE JENNINGS GRANT (*Performer*). Broadway: *Noises Off*, *The Country House*, *The Lyons*, *Guys and Dolls*, *Proof*, *An American Daughter*. Off-Broadway: *Mother of the Maid*, *The Marriage of Bette and Boo*, *The Beard of Avon*, *Between Us*, *Radiant Baby*. Regional: Beatrice in Simon Godwin's *Much Ado About Nothing* (Shakespeare Theatre). Film: *Love & Other Drugs*, *United 93*, *Custody*, *Frost/Nixon*, *When a Stranger Calls*, *Kinsey*. TV: *Pretty Little Liars: Original Sin*, *Notorious*, *We Crashed*, *Russian Doll*, *Billions*, *The Good Wife*, *Parenthood*, *Pan Am*. Graduate of Juilliard and the University of Pennsylvania.

BONNIE LANGFORD (*Performer*) has starred on stage, TV, and film since she was six years old. Broadway: *Gypsy* (aged nine) opposite Angela Lansbury (Drama Desk nomination); *Chicago*. West End: over fourteen productions including *Cats*, *Gypsy*, *42nd Street*, *9 to 5*, *Sweet Charity*, *Chicago*, *Les Misérables*, *Stephen Sondheim's Old Friends*. Select Film/TV: *Bugsy Malone*; *Eastenders* (BAFTA, NTA nomination, British Soap Award), *Marple*, *The Masked Dancer*, *Doctor Who*. Recordings: *Cats*, *9 to 5*, *Bonnie Langford Now*. Book: *Death in the Stars*. @thebonnielangford

BETH LEAVEL (*Performer*). Broadway: *Lempicka*, *The Prom*, *Bandstand*, *Baby It's You*, *Elf*, *Mamma Mia!*, *Young Frankenstein*, *The Drowsy Chaperone*, *42nd Street* (revival), *Crazy For You*, *The Civil War*, *Showboat*, *42nd Street*. Winner of the Tony, Drama Desk, OCC, and LA Drama Critics Awards. TV includes *The Ghosts of Christmas Always* (Hallmark), *The Walking Dead* (AMC), *The Bite* (Spectrum). MFA from UNC-G. Proud mom to T.J. and Sam and helplessly in love with Adam Heller. Grateful to my BRS/GAGE family.

GAVIN LEE (*Performer*). Broadway: *The SpongeBob Musical* (Tony/OCC nominations, Drama Desk Award), *Les Misérables*, *Mary Poppins* (Tony/OCC/Helen Hayes/Olivier nominations, Drama Desk and Theater World Awards), *How the Grinch Stole Christmas* (MSG), *Showboat* (Carnegie Hall). London's West End: *Stephen Sondheim's Old Friends*, *Beauty and the Beast*, *Top Hat*, *Mary Poppins*, *Crazy For You!*, *Me and My Girl*, *Oklahoma!*, *Contact*, *Les Misérables* World Arena tour. TV: *White Collar*, *Little America*, *Law and Order: SVU*, *The Good Wife*. @gavinleeofficial

JASON PENNYCOOKE (*Performer*). Olivier nominations, affiliated & WhatsOnStage: Lafayette/Jefferson (*Hamilton*); Bobby (*Memphis*), Jacob (*La Cage aux Folles*), *Porgy & Bess*, *Soul Sister*, *The Big Life*. West End: *Stephen Sondheim's Old Friends*; *Moulin Rouge!*; *Guys and Dolls*; *Kiss Me, Kate*; *Five Guys*; *Father Comes Home from the Wars*; *Rent*; *Starlight Express*; *Soul Train*; *Stomp*; *The Rat Pack*; *Simply Heavenly*; *Golden Boy*; *Cats*. Film & TV: *Rocketman*, *Loki* Season 2, *Dinner with the Parents*. Full resumé: spotlight.com/0777-5611-3923. Instagram: @jasonpennycooke

JOANNA RIDING (*Performer*) is a five-time nominee and two-time winner of the Olivier Award for Best Actress in a Musical, for Julie (*Carousel*, National Theatre, London) and Eliza (*My Fair Lady*, Drury Lane Theatre, London). Other recent roles include *Stephen Sondheim's Old Friends* (Gielgud, London), Sally (*Follies*, National Theatre), Madame Rose (*Gypsy*, Buxton Opera House), Babe (*The Pajama Game*, Shaftesbury, London), Countess (*A Little Night Music*, Holland Park Theatre, London), and Jane (*Witches of Eastwick*, Drury Lane).

JEREMY SECOMB (*Performer*). *Les Misérables* Arena World Tour, *Stephen Sondheim's Old Friends*, *Sister Act*, *A Christmas Carol*, *Cats*, *Evita*, *Sweet Charity*, *Les Misérables*, *Sweeney Todd*, *The Phantom of The Opera*, *Lend Me a Tenor*, *Priscilla*, *The Woman in White*, *Jerry Springer*. TV: *Stonehouse* (ITV). Concerts: Soloist; *Old Friends-Stephen Sondheim Gala*, *Bonnie & Clyde*, *Evita*, *Sunset Boulevard*, *Movies to Musicals*, *Les Misérables*, *Jesus Christ Superstar*. Awards: *Sweeney Todd* (Theatre World Award). Nominations: Lucille Lortel, Drama League, and Drama Desk).

KYLE SELIG (*Performer*). Broadway: Jacob Jankowski in *Water for Elephants*, Aaron Samuels in *Mean Girls*, Elder Price in *The Book of Mormon*. Tour/Regional: *The Book of Mormon*, *October Sky*, *West Side Story* at the Hollywood Bowl. Film/TV: *Welcome to Flatch*, *Monster High*, *FBI: International*, *Cat Person*, *The Housewives of the North Pole*, *Christmas in Tahoe*, *Madame Secretary*, *Evil*. 2010 Jimmy Award winner, Carnegie Mellon Drama grad. Instagram: @kaselig - "For my girls."

MARIA WIRRIES (*Performer*). Select credits include: *Stephen Sondheim's Old Friends* (Broadway), *Dear Evan Hansen* (Broadway and First National Tour), *Kinky Boots* (Off-Broadway Revival), and *Penelope* (Off-Broadway). Maria is currently in the BMI Lehman Engel Musical Theatre Workshop and has developed her own original musicals. She's a proud Penn State and Young Arts Alum, who wants to thank her childhood voice teacher Alan for gifting her a love of Sondheim; "children will listen."

DANIEL YEARWOOD (*Performer*). Broadway: *Sweeney Todd*, *Hamilton*, *Once on This Island*, *INK* (MTC). NYC: *Eyes of the World: From D Day to VE Day* (Carnegie Hall), *Grand Hotel* (NYCC). Regional: *In the Heights*, *Newsies* (Fulton Theatre). Love to Mom, Dad, & The Three Peas. Thank you, Tara, Sheri, and Erica. @daniel.j.yearwood

CO-STAR ALTERNATES

PAIGE FAURE (*Performer, Dance Captain*). Broadway: *A Beautiful Noise* (The Noise and standby), *Company* (standby), *Rodgers and Hammerstein's Cinderella* (Cinderella), *Miss Saigon* (Ellen u/s), *Bullets Over Broadway* (Ellen u/s), and *How To Succeed...* (Hedy La Rue). Five national tours, a few TV appearances, new works at The Old Globe, Paper Mill Playhouse, The York, The REV Theatre, and the Kennedy Center, pops orchestra soloist, and a choreographer a couple of times, but most importantly, partner to Jeff and Mom to Hank. @Paigefaire

ALEXA LOPEZ (*Performer*). Broadway debut! A proud Cuban-American hailing from South FL, she most recently originated the role of April in the world premiere of *Falcon Girls* at Yale Repertory Theatre. Additional theatre credits include: Jane Doe (*Ride the Cyclone*/Beck), Sonya (*Great Comet*/Idaho Shakespeare, GLT), Mimi (*Rent*/Cain Park), Lizzie Borden (*Lizzie!* Beck), Maria (*West Side Story*/Porthouse). Recent Grad of BWMT 2024. Biggest thanks to A&R, Julian, and Lauren. For my family. @alexaelopez

GREG MILLS (*Co-Star Alternate*). Thrilled to be a part of this extraordinary company! Broadway: *The Phantom of the Opera*, *The Woman in White*. Off-Broadway: *After the Ball* (Irish Rep). Tours: *Phantom* (Raoul), *Big* (Josh). Las Vegas: *Phantom*. Regional: *The Secret Garden* (Archie), *Jesus Christ Superstar* (Jesus), *Miss Saigon* (Chris), *Aida* (Radames), *Sweeney Todd* (Anthony), *Chess* (Freddie). Many thanks to Tara Rubin Casting, Seth, and John Mara Jr. Love to my family, wife Bridget & son Connor. Instagram: @gmightymills

PETER NEUREUTHER (*Performer*) is overjoyed to be making his Broadway debut with this legendary cast! Regional: *Les Misérables* (The Munny), *Beauty & The Beast* (The Northern Stage). Recent graduate of CCM MT. Thank you to the creative team, Tara Rubin Casting, and the amazing team at HCKR for this opportunity. Love to Mom, Dad, Lucy, and Grace. Thank you for always believing in my dreams! @peter_neureuther

DAVID LOBER (*Production Stage Manager*). Broadway: & *Juliet*, *The Lehman Trilogy*, *A Christmas Carol*, *Groundhog Day*, *Matilda*, *Saturday Night Fever*. National Tour and West Coast: *Dear Evan Hansen*, *Wicked*, *Henry IV*, *The Lion King*, *Disney's Beauty and the Beast*, *Million Dollar Quartet*, *Aida*, *Sunset Boulevard*, and *The Light in the Piazza*. CTG: *Caroline, or Change*; *33 Variations*; *Venice*; and *Burn This*. Love to Colleen and Phillip. Instagram: @davloman

MICHELLE BLAIR (*Stage Manager*) has enjoyed a long history of stage managing in Los Angeles and has worked extensively with Center Theatre Group on over forty productions at their three theatres. Most recently she served on the stage management team for the *To Kill a Mockingbird* National Tour and Green Day's *American Idiot* with Center Theatre Group and Deaf West Theatre. Other favorites include *The Pee-wee Herman Show* at Club Nokia, *A Long Bridge Over Deep Waters* with Cornerstone Theater Company, *Henry IV* with Shakespeare Center L.A., *Jersey Boys* in Las Vegas, and various productions with the L.A. Philharmonic and the Los Angeles Opera. Graduate of the University of Southern California and the University of Amsterdam. Mom to sixteen-year-old Liam and twelve-year-old Imogen. For Susie Walsh.

ANNA BELLE GILBERT (*Stage Manager*). Anna Belle is excited to be back in Los Angeles where she grew up. She worked at CTG, the Geffen and Pasadena Playhouses before heading out with the 1st National Tour of *Light in the Piazza*. She also spent over a decade working on *Jersey Boys* all across the country, including the 1st National Tour, New York, and Las Vegas. Thank you to Mom, David, and Harlowe for always having my back, no matter what.

STEPHEN SONDHEIM (*Music and Lyrics*) wrote the music and lyrics for *Saturday Night*, *A Funny Thing Happened on the Way to the Forum*, *Anyone Can Whistle*, *Company*, *Follies*, *A Little Night Music*, *The Frogs*, *Pacific Overtures*, *Sweeney Todd*, *Merrily We Roll Along*, *Sunday in the Park with George*, *Into the Woods*, *Assassins*, *Passion*, *Road Show*, and *Here We Are*, the lyrics for *West Side Story*, *Gypsy*, *Do I Hear a Waltz?* and additional lyrics for *Candide*. Anthologies of his work include *Side by Side by Sondheim*, *Marry Me a Little*, *Putting it Together*, *Sondheim on Sondheim*, and *Old Friends*. In 2010 Broadway's Henry Miller's Theatre was renamed in his honor, and in 2019 the refurbished Queen's Theatre in London's West End was renamed the Sondheim Theatre.

CAMERON MACKINTOSH (*Producer and Deviser*). With *Les Misérables*, *Hamilton*, *Oliver!*, and *The Phantom of the Opera* currently playing in London, Cameron remains the world's most prolific producer of musicals. His other original productions include *Cats*, *Miss Saigon*, *Mary Poppins* (co-produced with Disney and back on tour across the UK & Ireland), *Little Shop of Horrors*, *Song & Dance*, *Tomfoolery*, *Martin Guerre*, *The Witches of Eastwick*, and *Five Guys Named Moe*. He has reinvented modern versions of *Follies*, *Half a Sixpence*, *Barnum*, and *My Fair Lady*. Cameron and Director Matthew Bourne's newly reimagined production of *Oliver!* is playing to sellout audiences in the West End. With Stephen Sondheim, Cameron has created three musical revues: *Side by Side by Sondheim*, *Putting it Together*, and most recently, *Old Friends*. He owns and operates eight historic London theatres which have all been spectacularly rebuilt and refurbished for the 21st Century. Cameron was knighted in 1996 and is the first British producer to be elected to Broadway's Theater Hall of Fame.

MATTHEW BOURNE (*Direction and Musical Staging*). Two-time Tony winner Sir Matthew Bourne is the UK's most popular and successful director/choreographer. He is the Artistic Director of his own multi award-winning dance company, New Adventures, which has created an enormous new audience for narrative dance/theatre including *Swan Lake*, the world's longest running ballet production. Along with over 50 International awards, he is the recipient of the most wins in Olivier Award history. Sir Matthew co-directed the original Gala of *Stephen Sondheim's Old Friends* followed by the critically acclaimed West End production. He recently directed London's new hit production of Lionel Bart's *Oliver!*.

Side by Side with **JULIA MCKENZIE** who is best known for playing Miss Marple in Agatha Christie's *Marple*. Her expansive career leaves her notably recognized for her work on stage having starred in the West End and on Broadway, including her work with Stephen Sondheim on *Company*, *Side by Side by Sondheim*, *Follies*, and *Into the Woods*. Julia is the recipient

of the Olivier Award for Best Actress in a Musical in *Sweeney Todd* as well as *Guys and Dolls*, and the Evening Standard Award for Best Actress for *Woman in Mind* by Alan Ayckbourn. Julia also directed and co-devised *Putting It Together* with Sondheim in New York.

STEPHEN MEAR (*Choreography*). Three time Olivier award winner and Tony nominee Stephen Mear has had a prolific career stemming from London's West End to New York on Broadway his projects include *Mary Poppins*; *The Little Mermaid*; *Sunset Boulevard*; *Chess*; *Gypsy*; *La Cage Aux Folles*; *The Witches*; *Hello, Dolly*; *Anything Goes*; *Acorn Antiques the Musical*; to name but a few. He has been recognized in many ways for his contribution to dance and the arts by receiving prestigious awards, The Companion award from the Liverpool Institute of Performing Arts by Sir Paul McCartney, Honorary Doctor of Arts by Greenwich University, Two Carl Allan Award's and a CBE by the Queen presented by HRH King Charles III in 2020.

MATT KINLEY (*Scenic Design*).

JILL PARKER (*Costume Design*). Jill Parker began her career in costume at the English National Opera. She has since designed for opera and theatre, including the original West End production of *Stephen Sondheim's Old Friends*. She represents the late Maria Bjornson as associate costume designer on *Phantom of the Opera* worldwide.

WARREN LETTON (*Lighting Design*). Original lighting design credits include *Les Misérables: The Arena Spectacular* (World Tour), *Stephen Sondheim's Old Friends* (West End), *Priscilla Queen of the Desert* (Brazil), *Rite of Spring* (Sadlers Wells & European Tour), *Crazy For You* (Göteborg Opera), *Wind in the Willows* (West End), *Les Misérables - All Star Stage Concert* (West End). Warren is a UK-based lighting designer working internationally and trained at Rose Bruford College.

MICK POTTER (*Sound Design*) is one of the world's leading Sound Designers and has created over 100 first-class musical theatre designs globally, including multiple world premieres in the West End and on Broadway. He has received numerous awards, including an Olivier Award and Tony Award nomination, and is honoured to have worked with many of Theatres' greatest Producers, Composers, Directors, Creatives, and Artistes. mickpotter.com

GEORGE REEVE (*Projection Design*). George is a London-based video designer. Credits Include: *Maybe Happy Ending* (Broadway), *Oliver!* (West End), *Lord Of The Rings* (Chicago Shakespeare and Watermill Theatre), *My Son's A Queer* (West End), *Sunset Boulevard* (Sydney), *Hercules & Tarzan* (Disney), *In Dreams* (Toronto & Leeds), *Stephen Sondheim's Old Friends* (West End), *Hairspray* (UK Tour), *Six* (London & Broadway).

STEPHEN METCALFE (*Music Arranger*) is an orchestrator, arranger, and record producer for theatre and film. He has worked on over fifty productions around the world and produced more than a dozen successful cast albums. He orchestrated and produced the double-platinum award winning soundtrack albums for the Universal Pictures film of *Les Misérables*. Stephen is a two-time Grammy Award nominee.

About two-thirds of the original orchestrations that have been adapted for this production were drawn from Stephen Sondheim's great orchestral collaborator, Jonathan Tunick, to whom we are hugely indebted. Other orchestrations adapted for this production were originally created by Irwin Kostal, Robert Ginzler, Sid Ramin, and Michael Starobin.

ALFONSO CASADO TRIGO (*Music Supervision*). Theatre: *Les Misérables*, *Miss Saigon*, *The Phantom of the Opera*, *My Fair Lady*, *Mamma Mia*, *Candide*. Film (conductor): *Jurassic World: Dominion*, *Nightmare Alley*, *Christmas Chronicles 2*, *Chevalier*, *Ark*, *Thunder Force*, *Jingle Jangle*. Film (composer): *Venus*, *Héroes de Barrio*, and conductor/translator for over fifty Disney titles for Spanish adaptation. Orchestras: RLPO, ROSS, BSO, BBCCO, London Philharmonia, LCO, OBC, Northern Sinfonia, Hallé, CBSO, Arrangements: *101 Dalmatians* (UK Tour).

STEPHEN BROOKER (*Music Supervision*). Conductor/ musical director: *Les Misérables* film. Supervisor: *Les Misérables* (NY, London, Tokyo), *Half a Sixpence*, *Barnum*, *Oliver!*, *Mary Poppins*, *Miss Saigon*, *Cats*, *My Fair Lady*, *The Secret Garden*, *South Pacific*, *Chess*, *The Woman in White*, *Saturday Night Fever*, *The Phantom of the Opera*. Conductor: symphonies and choirs worldwide including Royal Choral Society for Her Majesty Queen Elizabeth. Composer: Walt Disney, Coca-Cola, Ford Motors, BMW cars, Jaguar Cars. Produced recordings of *Les Misérables*, *Oliver!*, *Mary Poppins*, *South Pacific*. Conducted the 85th Academy Awards.

ANNBRITT duCHATEAU (*Music Director*) is thrilled to bring *Stephen Sondheim's Old Friends* to the Ahmanson Theatre! Broadway: *Once Upon a Mattress*; *Kiss Me, Kate*; *Into the Woods*; *Oklahoma!*; *Frogs*; *Billy Elliot*; *Mary Poppins*; *Aladdin*; *Frozen*; *Some Like it Hot*. Encores: *Kismet*; *70, Girls, 70*; *Of Thee I Sing*; *Oliver!*; Kristina at Carnegie Hall. Sondheim's Company with the NY Philharmonic. Love to Charles, Julien, & Fabien. This one's for Mom.

STEFAN MUSCH (*Wig, Hair, and Makeup Design*). Theatre: *Stephen Sondheim's Old Friends* (London), *The Phantom of the Opera* (London, 25th Anniversary, U.K. Tour, International), *Les Misérables* (London, World Arena Tour, Staged Concerts, International), *Miss Saigon*, *Shrek* (London, International), *King Lear* (Chichester, London). London: *An American in Paris*, *Frozen: The Play*, *Lady Windermere's Fan*, *The Book of*

Mormon, Hairspray, Gone with the Wind, Wicked, Lord of the Rings. Germany: Disney's *Aida, Elisabeth, Tabaluga and Lili, Cats.* Film: *Young Woman and the Sea, Spencer, Maleficent, Cinderella, Flawless, The Merchant of Venice.* Events: Royal Variety Show (2014, 2016), Her Majesty's the Queen Platinum Jubilee Concert at Buckingham Palace. U.K. Theatre Trust Award for Outstanding Achievement in Wigs and Make-Up.

JO MORRIS (*Associate Choreographer*). Training: Millennium Performing Arts. Associate credits include *Hello, Dolly; White Christmas; Singin' in the Rain; Guys and Dolls; Chess; Top Hat; 42nd Street, Thoroughly Modern Millie, Sunset Boulevard, Mack & Mabel, Crazy For You, The Pajama Game, Me and My Girl.*

NIKKI WOOLLASTON (*Associate Director*). Director Credits: *La Fille du Regiment* (Grange Park Opera), *Barry Humphries - The Man Behind the Mask* (Gielgud Theatre), *Sweet Charity* (Pimlico Opera), *Anton & Erin* (UK Tours). Associate Director Credits: *Joseph and The Amazing Technicolor Dreamcoat* (London, Melbourne, Toronto & UK Tour), *Chess* (London Coliseum).

THE TRC COMPANY (*Casting*). Broadway: *Dead Outlaw, BOOP! The Musical, Buena Vista Social Club, Death Becomes Her, Left on Tenth, The Outsiders, SIX, Aladdin.* National Tours: *The Phantom Of The Opera, Water for Elephants, Beauty & The Beast, The Wiz, Back To The Future, Mamma Mia!, Les Misérables.* The TRC Company is proud to continue the casting legacy of Tara Rubin Casting and Johnson-Liff Casting.

EDWARD NELSON (*Company Manager*). A veteran Broadway manager for 35 years, he has managed dozens of productions worldwide. Serving as management consultant for Dodger Theatricals on the Australian premiere of *Jersey Boys*, he has managed numerous productions in Las Vegas yet most of his career has been Broadway based, most recently managing Tony winner *Appropriate*. Highlights: *Monty Python's Spamalot*, John Guare's *Six Degrees of Separation*, and Lincoln Center Theater's Tony winning production of *Carousel*.

WHAT if WE PRODUCTIONS (*Production Management*) delivers production management and technical supervision to theatre and special events worldwide. Past projects include *Brandcast, The Secret Garden, and Message in a Bottle*, showcasing a commitment to collaboration, meticulous planning, and innovative solutions for theatre and special events.

DARYL ROTH (*Producer*) holds the singular distinction of producing 7 Pulitzer Prize-winning plays: *Anna in the Tropics, August: Osage County, Clybourne Park, How I Learned to Drive, Proof, Edward Albee's Three Tall Women, and Wit.* The proud recipient of 13 Tony Awards and London's Olivier Award, her over 130 award winning productions include: *Kinky Boots; Angels in America; Appropriate; Between the Lines; Company; Gloria: A Life; The Goat, or Who is Sylvia?; Indecent; Into the Woods; Left on Tenth; Life of Pi; The Normal Heart; The Tale of the Allergist's Wife; Twilight: Los Angeles, 1992; and War Horse.* Currently: *Othello, The Picture of Dorian Gray.* Trustee, Kennedy Center for the Performing Arts and Lincoln Center Theater. Honored to have been inducted into the Theater Hall of Fame. DarylRothProductions.com.

FORESIGHT THEATRICAL (*Executive Producer on behalf of CMI & Daryl Roth*) is comprised of partners Allan Williams, Aaron Lustbader, and Mark Shackel and Director of Operations, Lane Marsh, who oversee and supervise *Moulin Rouge! The Musical* (Broadway and N. American Tour), *Hell's Kitchen, The Great Gatsby, Maybe Happy Ending, Buena Vista Social Club, The Picture of Dorian Gray, and Boop! The Musical* on Broadway; as well as the worldwide management of *Kinky Boots*.

THE STEPHEN SONDHEIM TRUST is responsible for the rights in the music and lyrics created by Stephen Sondheim and oversees the licensing, administration and promotion of his works for theatre, film, concert, and publishing. The largest beneficiary of future royalties derived by the Trust is the Stephen Sondheim Foundation, established under his will to support the development and advancement of playwrights, composers and lyricists for the theatre in the early stages of their careers. Rick Pappas serves as Trustee of the Stephen Sondheim Trust.

MANHATTAN THEATRE CLUB is a not-for-profit theatre under the leadership of Artistic Director Lynne Meadow since 1972. In 2023, Chris Jennings became MTC's executive director. MTC is one of the country's most prominent and prestigious theatres. Our mission is to produce innovative theatre of the highest quality, with a focus on presenting NY, American and world premieres. Our productions have earned numerous awards including 7 Pulitzers, 30 Tonys, 51 Drama Desks, and 49 Obies. Please visit ManhattanTheatreClub.com

CENTER THEATRE GROUP

SNEHAL DESAI (*Artistic Director, he/him*) was appointed Center Theatre Group's third artistic director in 2023. As an artistic leader, Snehal has sought to raise awareness on social issues that affect Angelenos through impactful and empowering storytelling. Previously, he was the Producing Artistic Director of East West Players. A Soros Fellow and the recipient of a Tanne Award, Snehal was the Inaugural Recipient of the Drama League's Classical Directing Fellowship. He has served on the boards of the Consortium of Asian American Theaters and Artists (Caata), Theatre Communications Group (TCG), and currently serves on the board of the National Alliance for Musical Theatre (NAMT). Snehal was on the faculty of USC's graduate program in Arts Leadership and is a graduate of the Yale School of Drama.

MEGHAN PRESSMAN (*Managing Director/CEO, she/her*) joined Center Theatre Group in 2019. Previously, she served as Managing Director of Woolly Mammoth Theatre Company (D.C.), Director of Development for Signature Theatre (N.Y.), and Associate Managing Director of Berkeley Rep. She is a graduate of Yale School of Drama/Yale School of Management and serves as a mentor in the Theater Management program. Meghan has served as the Vice-Chair for the Theatre Communications Group Board of Directors and is a member of the Broadway League.

DOUGLAS C. BAKER (*Producing Director, he/him*) joined Center Theatre Group in 1990. Doug is an active member of the Broadway League, the Independent Presenters Network (IPN), and is a proud member of the Association of Theatrical Press Agents and Managers (ATPAM). In 2013, Doug received the Broadway League's prestigious Outstanding Achievement in Presenter Management Award.

GORDON DAVIDSON (*Founding Artistic Director*) led the Taper throughout its first 38 seasons, guiding over 300 productions to its stage and winning countless awards for himself and the theatre—including the Tony Award for theatrical excellence, Margo Jones Award, The Governor's Award for the Arts, and a Guggenheim fellowship. *The Kentucky Cycle* and *Angels in America (Part One)* won the Pulitzer in consecutive years and, in 1994, three of the four plays nominated for the Tony Award for Best Play were from the Taper (*Angels in America* won). In 1989, Gordon took over the Ahmanson and, in 2004, he produced the inaugural season in the Kirk Douglas Theatre.

ERIC SIMS (*General Manager, Presentations, he/him*) joined CTG in 2005 and has served in various capacities, including as the Director of Operations for the Kirk Douglas Theatre from 2008-2018. Previously, he was the Managing Director of the Powerhouse Theatre in Santa Monica. He is the Vice President of the Culver City Downtown Business Association and was the Co-Chair of the Ovation Rules Committee, producing the Ovation Awards from 2015-2019.

CENTER THEATRE GROUP, one of the nation's preeminent arts and cultural organizations, is Los Angeles' leading not-for-profit theatre company, which, under the leadership of Artistic Director Snehal Desai, Managing Director / CEO Meghan Pressman, and Producing Director Douglas C. Baker, programs seasons at the 736-seat Mark Taper Forum and 1,600 to 2,100-seat Ahmanson Theatre at The Music Center in Downtown Los Angeles, and the 317-seat Kirk Douglas Theatre in Culver City. In addition to presenting and producing the broadest range of theatrical entertainment in the country, Center Theatre Group is one of the country's leading producers of ambitious new works through commissions and world premiere productions and a leader in interactive community engagement and education programs that reach across generations, demographics, and circumstances to serve Los Angeles. Founded in 1967, Center Theatre Group was led by Founding Artistic Director Gordon Davidson until 2005 when Michael Ritchie was the artistic director until his retirement in 2021; Snehal Desai was appointed the organization's next artistic director in 2023. Center Theatre Group has produced more than 700 productions across its three stages, including such iconic shows as *Zoot Suit*; *Angels in America*; *The Kentucky Cycle*; *Biloxi Blues*; *Twilight: Los Angeles, 1992*; *Children of a Lesser God*; *Curtains*; *The Drowsy Chaperone*; *9 to 5: The Musical*; and *Bengal Tiger at the Baghdad Zoo*. CenterTheatreGroup.org

**ADDITIONAL STAFF
FOR CAMERON MACKINTOSH INC.:**

Directors Cameron Mackintosh
 Nicholas Allott, Alan Finch, Richard Knibb,
 Robert Noble, Thomas Schönberg
 Executive Producer Seth Sklar-Heyn
 Technical Director Jerry Donaldson
 Creative Director David Dolman
 Marketing Director Lucy May
 Graphic Designer Angeline Teo
 Accounts Assistant Katherine McNamee

FOR FORESIGHT THEATRICAL

GM Partner Aaron Lustbader
 GM Consultant Alex Wolfe

THE TRC COMPANY

Claire Burke CSA, Kevin Metzger-Timson CSA,
 Xavier Rubiano CSA, Peter Van Dam CSA,
 Tara Rubin CSA, Merri Sugarman CSA,
 Louis DiPaolo CSA, Spencer Gualdoni CSA,
 Olivia Paige West CSA, Frankie Ramirez CSA

Associate Scenic Designer Christine Peters
 Associate Costume Designer Hunter Kaczorowski
 Associate Lighting Designer Victoria A. Bain
 Associate Sound Designer Nic Gray
 Associate Projections Designer Eli Garmon
 Associate Wigs, Hair & Makeup Designer Dotty Petersen
 Wig Maker Stefan Musch
 Assistant Lighting Designer Jenna K. Pletcher
 Production Electricians Erik Plath, Jeremy Wahlers
 Moving Light Programmer Andi Davis
 Production Sound Joshua S. Hummel
 Head Sound Maxine R. Gutierrez
 A2 Thomas Sorce
 Advance Sound Theodore Abdelmaesh
 Production Video Daniel Mueller, Andrew Gusciora
 Video Programmer Ido Levran
 Production Assistants Abby Peterson, Gabriella Garcia, Hailey Gold
 Music Copyist Mark Graham
 Stitcher Marissa Soto
 Physical Therapy FusionArts/Karen Moran P.T.
 Travel Agents The A Team at Tzell Travel Andi Henig,
 Jeanne Lafond and Vickie Okolisan
 Immigration Counsel Carly B. Wiskoff/Wiskoff Law, PLLC
 Visa Services Viva La Visa

CREDITS

Scenery Fabrication and Modification by F&D Scene Changes Ltd
 Lighting equipment provided by Christie Lites Broadway Inc
 Sound equipment provided by Masque Sound & Recording Corporation
 Video equipment provided by Sound Associates Inc.
 Shipping by Rock-It Global
 Costumes constructed by
 Julianne Kroboth, Colin Davis Jones Studios
 and Bob Mackie
 Trucking by Clark Transfer

SPECIAL THANKS

Jo Geltman @ Travel Experts, Inc
 Lamp & Pencil, Marcus Hall Props, Howard Eaton Lighting, Serino Coyne,
 The Press Room, and all our friends at MTC.



The actors and stage managers employed in this production are members of Actors' Equity Association, the union of professional actors and stage managers in the United States. This theatre operates under an agreement between the League of Resident Theatres and Actors' Equity Association, the Union of Professional Actors and Stage Managers in the United States.



The musicians employed in this production are members of the American Federation of Musicians.



The Director and Choreographer are members of the Society of Stage Directors and Choreographers, Inc., an independent national labor union.



United Scenic Artists represents the designers and scenic painters for the American Theatre.



The following employees are represented by the International Alliance of Theatrical Stage Employees, Moving Picture Machine Operators, Artists and Allied Crafts of the United States, its Territories and Canada, AFL-CIO, CLC: Stage Crew Local 33; Local Treasurers and Ticket Sellers Local 857; Wardrobe Crew Local 768; Make-up Artists and Hair Stylists Local 706.



The Company Manager and House Managers employed in this production are represented by the Association of Theatrical Press Agents & Managers.

Center Theatre Group is a member of the League of Resident Theatres (LORT), the American Arts Alliance, the Broadway League, Independent Producers' Network (IPN), and the Theatre Communications Group (TCG).

MUSICAL CREDITS

SUNDAY IN THE PARK WITH GEORGE

Music and Lyrics by Stephen Sondheim
 Book by James Lapine
 Orchestration by Michael Starobin

SWEENEY TODD

Music and Lyrics by Stephen Sondheim
 Orchestration by Jonathan Tunick

COMPANY

Music and Lyrics by Stephen Sondheim
 Orchestration by Jonathan Tunick

MERRILY WE ROLL ALONG

Music and Lyrics by Stephen Sondheim
 Orchestration by Jonathan Tunick

**A FUNNY THING HAPPENED ON THE
WAY TO THE FORUM**

Music and Lyrics by Stephen Sondheim
 Orchestration by Sid Ramin & Irwin Kostal

WEST SIDE STORY

Music by Leonard Bernstein
 Lyrics by Stephen Sondheim
 Orchestration by Sid Ramin & Irwin Kostal

DICK TRACY

Music and Lyrics by Stephen Sondheim
 by Jonathan Tunick

FOLLIES

Music and Lyrics by Stephen Sondheim
 Orchestration by Jonathan Tunick

PASSION

Music and Lyrics by Stephen Sondheim
 Orchestration by Jonathan Tunick

GYPSY

Music by Jule Styne
 Lyrics by Stephen Sondheim
 Orchestration by Sid Ramin & Robert Ginzler

INTO THE WOODS

Music and Lyrics by Stephen Sondheim
 Book by James Lapine
 Orchestration by Jonathan Tunick

THE MAD SHOW

Music by Mary Rogers
 Lyrics by Stephen Sondheim

THANK YOU

Center Theatre Group would like to thank all the firefighters and first responders who were on the frontlines risking their lives to keep us all safe. Our thoughts continue to be with everyone who has been affected by this unprecedented natural disaster and particularly for those of you who continue to be impacted at this time. We want you to know that we are here for you.

And thank you to all of you who checked in to see how our theatres, staff, board and artists were doing. There has been so much strength, kindness, and support from you, our community and it is what we hold onto now as we all rally together to rebuild and heal.

For the latest information on CTG's efforts to support our local communities, artists, student, and colleagues affected by the wildfires please follow us on social media @ctgla or on our website at centertheatregroup.org.

We love you, Los Angeles.



SNEHAL DESAI Artistic Director | **MEGHAN PRESSMAN** Managing Director/CEO | **DOUGLAS C. BAKER** Producing Director
GORDON DAVIDSON Founding Artistic Director

Center Theatre Group would like to thank its exceptional staff for their ongoing commitment, dedication, and extraordinary efforts.

ARTISTIC

LINDSAY ALLBAUGH* Associate Artistic Director
SONIA DESAI Director of Literary and Dramaturgy
PAIGE VEHWALD Artistic Programs Manager
TIFFANY SLAGLE° Artistic & Literary Administrative Assistant
RANDOLPH MEREDYTH-DRAKE Executive Assistant to the Artistic Director

EXECUTIVE

CAMILLE SCHENKMAN* Deputy Managing Director
KHANISHA FOSTER Director of Equity, Belonging & Engagement
NAIMA OROZCO-VALDIVIA° Executive Programs Manager
MADISON QUIROZ Executive Office Liaison

MANAGEMENT

NAUSICA STERGIOU* General Manager
ERIC SIMS* General Manager, Presentations
KATIE SOFF* Associate General Manager
JEFFREY UPAH* General Management Associate
KIARA BRYANT Company Manager
TAYLOR ANNE CULLEN Assistant Company Manager

EDUCATION AND COMMUNITY PARTNERSHIPS

JESUS REYES* Director of Learning and Community Partnerships
TRACI KWON* Arts Education Initiatives Director
AURORA ILOG Creative Workforce Initiatives Director
MEIGHAN LA ROCCA Program Manager
COURTNEY CLARK* Digital Learning Manager
NATALIA QUINTERO-RIESTRA Programs Associate
JORDAN GELOTTE Education & Community Partnerships Coordinator
ESTELA GARCIA, CHRISTINE BREIHAN Resident Teaching Artists
ZACHARY BONES, REBECCA GRAUL, ELIJAH GREEN, CATHERINE HOLLY, AJA HOUSTON, JOHNATHAN L. JACKSON, DAVID JIMENEZ°, CARENE ROSE MEKERTICHYAN, MARA PALMA, ROBERT PATERNO, MADDOX PENNINGTON, MARTA PORTILLO, TARA RICASA, TIANA RANDALL-QUANT, MONIQUE SYPKENS Teaching Artists

PRODUCTION

JOE HAMLIN* Director of Production
SHANNON G. BICKNELL Senior Production Manager
LESLIE GONZALEZ Associate Production Manager
CAMBRIA CHICHI° Production Supervisor
ISAAC KATZANEK Technical Director

SHAWN ANDERSON* Head Carpenter (Ahmanson Theatre)
SCOTT LUCAS Head Properties (Ahmanson Theatre)
JARED BATTY Head Electrician (Ahmanson Theatre)
ROBERT SMITH* Head Sound (Ahmanson Theatre)
SHANE ANDERSON Head Flyrail (Ahmanson Theatre)
MICHAEL GARDNER* Wardrobe Supervisor (Ahmanson Theatre)
MARY BORGIA Hair & Make-up Supervisor (Ahmanson Theatre)
CHRISTINE L. COX House Manager (Ahmanson Theatre)
EMMET KAISER* Head Carpenter (Mark Taper Forum)
MARY ROMERO Head Properties (Mark Taper Forum)
AARON STAUBACH* Head Electrician (Mark Taper Forum)
CHRISTIAN HALE Head Sound (Mark Taper Forum)
LORETTA BUSSEN Wardrobe Supervisor (Mark Taper Forum)
THERESE LEVASSEUR Hair & Make-up Supervisor (Mark Taper Forum)
MERRIANNE NEDREBERG* Shop Director

KATE REINLIB Associate Prop Director
ERIC BABB° Assistant Prop Director
RAUL VEGA MARTINEZ° Shop Supervisor
SHANTA FARIA DE SA Costume Shop Manager
CAYLYN DABNEY Resident Assistant Costume Designer
ASHPHORD JACOWAY Costume Shop Coordinator
TAYLOR DECKER First Hand/ KDT Wardrobe Supervisor

OPERATIONS

PETER WYLIE Operations & Facilities Director
CARLOS AYALA Facilities Manager
VANESSA DE LOERA Facilities Associate
JULIO A. CUELLAR* Facilities Assistants
OSCAR DOMINGUEZ, MADIE GILLETTE Facilities Assistants
JASMINE BRAFF Operations Manager
SIMON J.O. MARTIN Operations Assistant
NATALIE MARCEAU, SIMON J.O. MARTIN, REGINA NILES, ANTONIO DIXON Drivers
VANESSA BRADCHULIS, OLIVIA CHOATE, PRESSLY COKER, MONICA GREENE, PAT LOEB, TWON POPE, SAM UDERO Stage Door Attendants

FINANCE, INFORMATION TECHNOLOGY, AND HUMAN RESOURCES

CHERYL SHEPHERD Chief Financial Officer
PETER BANACHOWSKI Controller
DENICE BEHDAD Assistant Controller
ANAHITA ASHRAFIPOUR Senior Accountant
XOCHITL ORTEGA Accounts Payable Supervisor
KERRY BETH KAUFFMAN* Accounting Assistant
JESSICA HERNANDEZ Payroll Manager
MYLAH BARRETO Payroll Specialist
TOM MEGALE IT Director
JANELLE CABRERA TORRES Tessitura & Web Administration Director
JOEY SOLANO Digital Product Manager
CRIS SPACCA* Information Technology Manager
JODY HORWITZ* Director of Human Resources
JERMAINE CARTER HR Generalist

MOSS ADAMS Auditor
MICHAEL C. DONALDSON, LISA A. CALLIF Legal Counsel
GIBSON, DUNN & CRUTCHER Legal Counsel

INSTITUTIONAL ADVANCEMENT

SARAH SULLIVAN Director of Institutional Advancement
RICKY CARTER Director of Development
CRYSTAL DIAZ Director of Special Events
KATASHA ACOSTA-ROWE Director of Advancement Operations
PAULA MATAALLANA Director of Institutional Grants
GRACE PIPER Assistant Director, Prospect Research and Strategy
NICOLE SCIPIONE* Senior Individual Giving Officer
OYE EHIKHAMHEN Individual Giving Officer
ZAIN PATEL Individual Giving Officer
WENDY HUI Grants Manager
NICKI BONURA Advancement Associate
RACHEL BONDS Senior Analyst, Gift Accounting and Reporting
HAILEY BRUNSON Annual Giving Coordinator
ALICE PELAYO Donor Liason & Institutional Advancement Assistant
IRENE CHO Executive Assistant to the Director of Institutional Advancement

MEDIA AND CONTENT

BRETT WEBSTER Director of Media and Content
JESSICA DOHERTY° Associate Content Director
BOBBY MARTINEZ Content Associate
KEELEY BELL Media and Content Coordinator
DAVIDSON & CHOY PUBLICITY:
TIM CHOY, PETER GOLDMAN, VICTORIA WESTBROOK Publicity Consultants

DEANNA MCCLURE Design Director
JAVIER VASQUEZ* Digital Content Producer
LILA WAKILI Senior Graphic Designer
CINDY ANDRADE Graphic Designer
CHEYNE GALLARDE Graphic Designer

MARKETING AND SALES

GARRETT COLLINS Director of Marketing and Sales
PAMELA KUHR Director of Membership
BRENNIE TELLU Ticketing & Customer Experience Director
CANDICE WALTERS* Marketing Campaigns & Operations Director
SKYPP CABANAS* Senior Manager, Ticket Operations
DEVANY HARDEN* Senior Manager, Audience Loyalty
KATHARINE MEANS* Senior Manager, Advertising
MIKE RATTERMAN Senior Manager, Membership Engagement
ANDRESSA ROYER Senior Manager, Audience Development & Marketing Events
NINA PERRY Account Sales Manager
CHASE ANDERSON-SHAW Kirk Douglas Theatre Manager
ROMAN DICESARE Email Marketing Associate
MARC GOODMAN Senior Analyst, Sales Strategy & Data
TINTIN NGUYEN Ticket Operations Coordinator
PETER SULLIVAN Marketing Coordinator
AARON HIGAREDA Membership Engagement Supervisor
LA'RAE CARMICHAEL, JOE CASPER, NATALIE DRESSLE, DAVID HUNTER, ABHI KATYAL, KATHLEEN LITTLEFIELD, JO NUNZ, IAN PRICE, DONALD RIZZO, BENJAMIN SCHWARTZ, DIANE WARD Membership Engagement Representatives
CAROLINE THOMPSON/IMPACT 123 Media Planning

SANDY CZUBIAK* Audience & Subscriber Services Director
JENNIFER BAKER* Audience Services Senior Supervisors
CHERYL HAWKER* Audience Services Senior Supervisors
JONATHAN FLORES Audience Services Assistant Supervisor
JURGEN SANTOS, CHRISTIAN UNGER Audience Services Sales Associates
JOSHUA BADILLO, CLAY BUNKER, FRANK ENSEBERGER, DANIEL GARCIA, MICHAEL MUNOZ, SAMUEL ROQUE, DAVID SALAZAR, ASHLEY SANDOVAL, CHRISTINA WRIGHT Audience Services Representatives
JESSICA ABROMAVICH, JUSTINE PEREZ* Donor Associates
DANUTA SIEMAK* Subscriber Services Senior Supervisor
CHRISTINA GUTIERREZ* Subscriber Services Supervisor
LIGIA PISTE* Subscriber Services Senior Representatives
PETER STALLOCH* Subscriber Services Senior Representatives

MICHAEL VALLE* Box Office Treasurer
KEANA JACKSON, YULIZA BARRAZA, 1st Assistant Treasurers
LUIS ESPINOZA, KATLYN GALVEZ, MICHAEL KEMPISTY, RICHARD RUBIO, 2nd Assistant Treasurers

ARTISTIC DEVELOPMENT & COMMISSIONS

As part of our commitment to supporting new plays and playwrights, we foster and develop a broad range of theatrical work from diverse artists locally, nationally, and abroad.

Artists creating new work commissioned by Center Theatre Group this season:

AZIZA BARNES	YOUNG JEAN LEE	CYNTHIA GRACE ROBINSON
LISA D'AMOUR	MATTHEW LOPEZ	SARAH RUHL
LARISSA FASHORSE	ROGER Q. MASON	T.JARA TURK-HAYNES
JENNIFER HALE	TARIHIM MOELLER	LUIS VALDEZ
ALESHEA HARRIS	JANINE NABERS	PAULA VOGEL
GERALDINE ELIZABETH INOA	QUI NGUYEN	KAREN ZACARIAS
LISA KRON	LYNN NOTTAGE	
KIMBER LEE	MARCO RAMIREZ	

LA WRITERS' WORKSHOP

Since 2005, we have invited local playwrights to spend a year researching and writing a new work with the feedback of their fellow writers and artistic staff as part of our L.A. Writers' Workshop.

Learn more at CTGLA.org/ARTISTS

2023/24 COHORT:

AMY BERRYMAN	CHRISTOPHER OSCAR PEÑA
INDA CRAIG-GALVÁN°	RAMIZ MONSEF
ISAAC GÓMEZ	JASMINE SHARMA

LA ARTIST RESIDENCIES

DIANA BURBANO
LARISSA FASHORSE
MICHAEL FEINSTEIN
MICHAEL JOHN GARCÉS
DANIEL ALEXANDER JONES
MADELINE SAYET
KRISTINA WONG

CRITICAL MASS PERFORMANCE GROUP
ENSEMBLE STUDIO THEATRE LA
IN PARTNERSHIP WITH CHALK REP
NATIVE VOICES AT THE AUTRY